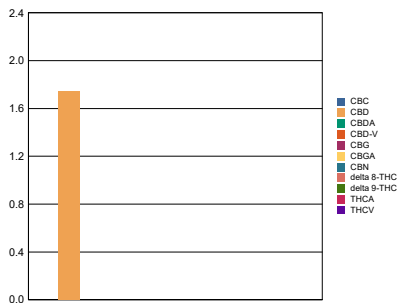


Sample Information			
Sample Identification	Sin Tax Vape 500mg		
Laboratory Number	1912120-06		
Batch Number	STV5010		
Matrix	Products		
Cannabinoid (HPLC)	mg/mL	mg/unit	%
Compound			
THCA	ND	ND	ND
delta 9-THC	ND	ND	ND
delta 8-THC	ND	ND	ND
CBGA	ND	ND	ND
THCV	ND	ND	ND
CBDA	ND	ND	ND
CBD	17.4	522	1.74
CBD-V	ND	ND	ND
CBN	ND	ND	ND
CBG	ND	ND	ND
CBC	ND	ND	ND
Cannabinoids Total			
Max Active THC	0.00	0.00	0.00
Max Active CBD	17.40	522.00	1.74
T.Active Cannabinoids	17.40	522.00	1.74
Total Cannabinoids	17.40	522.00	1.74
Max Active Ratios			
NA : 1 CBD to THC			
0.00 :1 THC to CBD			

Cannabinoid (%)



RS (GCMS-MS)	ppm	RL
Compound		
Acetone	NT	NT
Acetonitrile	NT	NT
Benzene	NT	NT
n-Butane	NT	NT
Carbon Tetrachloride	NT	NT
Chloroform	NT	NT
1,2-Dichloroethane	NT	NT
Ethanol	NT	NT
Ethyl acetate	NT	NT
Ethylene oxide	NT	NT
n-Heptane	NT	NT
n-Hexane	NT	NT
iso-Butane	NT	NT
iso-Pentane	NT	NT
Methylene Chloride	NT	NT
n-Pentane	NT	NT
Propane	NT	NT
2-Propanol (IPA)	NT	NT
Tetrahydrofuran	NT	NT
Toluene	NT	NT
Trichloroethene	NT	NT
o-xylene	NT	NT
Xylenes (m,p)	NT	NT

Terpenes (HPLC)	mg/mL	%
Compound		
alpha-Bisabolol	NT	NT
(-)-Borneol and (+)-Borneol	NT	NT
Camphene	NT	NT
Camphor	NT	NT
beta-Caryophyllene	NT	NT
trans-Caryophyllene	NT	NT
Caryophyllene Oxide	NT	NT
alpha-Cedrene	NT	NT
Cedrol	NT	NT
Endo-fenchyl Alcohol	NT	NT
Eucalyptol	NT	NT
Fenchone	NT	NT
Geraniol	NT	NT
Geranyl acetate	NT	NT
Guaiol	NT	NT
Hexahydrothymol	NT	NT
alpha-Humulene	NT	NT
Isoborneol	NT	NT
Isopulegol	NT	NT
Limonene	NT	NT
Linalool	NT	NT
p-Mentha-1,5-diene	NT	NT
beta-Myrcene	NT	NT
trans-Nerolidol	NT	NT
Ocimene Isomer 1	NT	NT
alpha-Pinene	NT	NT
beta-Pinene	NT	NT
Pulegone	NT	NT
Sabinene	NT	NT
Sabinene Hydrate	NT	NT
gamma-Terpinene	NT	NT
alpha-Terpinene	NT	NT
alpha-Terpineol	NT	NT
3-Carene	NT	NT
Ocimene Isomer 2	NT	NT
gamma-Terpineol	NT	NT
Terpinolene	NT	NT
Valencene	NT	NT
Nerol	NT	NT
cis-Nerolidol	NT	NT
Total Terpenes	NT	NT



Metals	ppm	RL
Compound		
Arsenic	NT	NT
Cadmium	NT	NT
Mercury	NT	NT
Lead	NT	NT
Percent Moisture		
NT %		
Water Activity		
NT		

RL = Reporting Limit
 NA = Not Applicable
 NT = Not Tested
 ND = Non Detected